



***Mengqi***

Est. 1998

***Mengqi***<sup>®</sup>

**Cixi Zhuoyue Electric Appliance Co.,Ltd**

Address: West Guanhaiwei Industrial Zone, Cixi, Zhejiang, China

Tel: +86-574-63631113 Fax: +86-574-63630311

Email: [admin@cxzy-electric.com](mailto:admin@cxzy-electric.com)

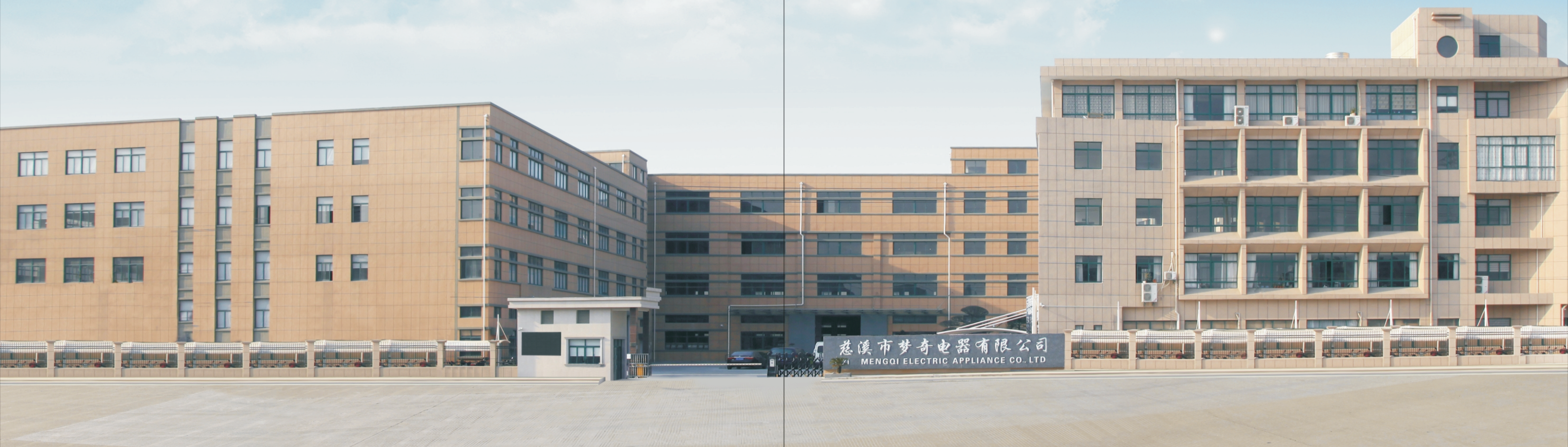
Website: [www.cixizy.com](http://www.cixizy.com)





# Mengqi<sup>®</sup>

Cixi Zhuoyue Electric Appliance Co., Ltd



## Company Profile »

Cixi Zhuoyue Electric Appliance Co., Ltd adhere to the market demand, make use of technological progress as the driving force, listen widely to opinions of all customers, and research ambient temperature, voltage, energy saving etc from different areas which are key factors to design and produce products. Owned products for energy saving, efficiency, safety, environment friendly, made the users' and authorities' trust and recognition, obtained CE/CB/SONCAP certification and ISO environment certification made by authorities.

“Sincerity-centered, quality first”—as a common value of enterprise culture, Zhuoyue bases on solid & integrated capability, processing strategic of better brand.

We warmly welcome all friends from worldwide to create prosperous future together.



### Professional



### Reliable





Cixi Zhuoyue Electric Appliance Co., Ltd

Overview

Company Name:CiXi Zhouyue Electric Appliance Co.,Ltd.  
Established in1998  
Number of Staff:1,000 staffs  
Business Module:Manufacture & Distribution  
Whether offer OEM/ODM:Yes  
Factory Size:50,000 Square Meters  
Production:Chest Freezer/Water Dispenser/Water Purifier  
Principal Market:South Asia/Middle East/Africa/South America/East Europe

Guarantee and Maintenance Services

Guaranteed Items

- 1.) Generally, we promise to offer 1-3 years guarantee without deliberate damage
- 2.) 3 years for compressor
- 3.) 1 year for quick-wear parts including handle, key, controller, wheel, condenser etc. Of chest freezer and plastic, controller, condenser, etc, Of water dispenser

Maintenance

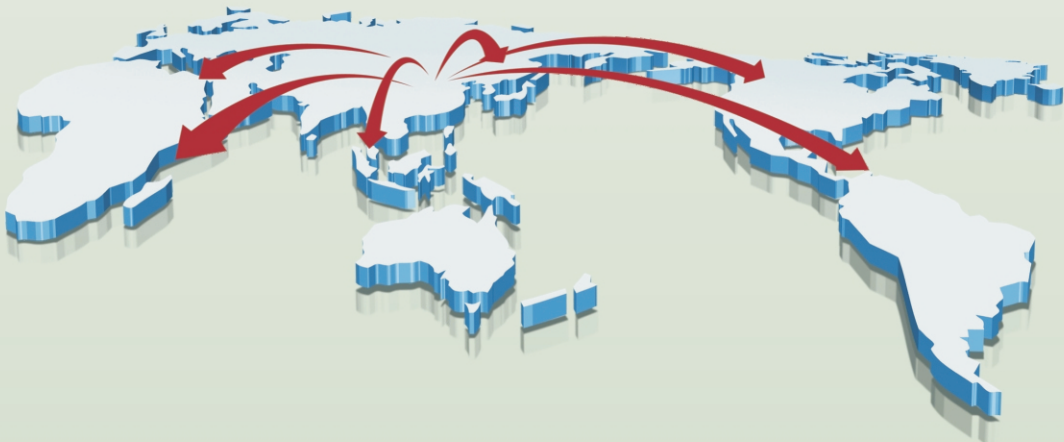
- 1. Provide free quick-wear parts for every order and urgent spare parts during sales
- 2. Provide technology supports during maintenance
- 3. Have maintenance center in Dubai U.A.E

Others

- Consulting service
- Quick delivery
- Provide marine transport consulting
- Provide certification assistance
- Provide new product assistance

THE CONTENTS »

Single Door Chest Freezer -----	05
Double Door Chest Freezer -----	11
Sliding Glass Door Chest Freezer-----	13
Curved Glass Door Chest Freezer-----	15
Double Chamber Chest Freezer -----	17
Vehicle & Household Refrigerator -----	19
Mini Refrigerator -----	22
Standing Water Dispenser -----	23
RO Filter System Water Dispenser-----	25
Desk Top Water Dispenser-----	37
Water Purifier Series -----	43
Accessories and Plugs -----	45





**Mengqi®**

# Single Door Chest Freezer Series



## DC Solar Chest Freezer



Solar Panel

Solar controller



battery system



12/24V DC Refrigerator

AC 220-240V



AC/DC Adapter

- AC & DC high quality compressor are available for fast freezing by R134a refrigerant;
- DC Freezer is mainly powered by Solar Cell Panel;
- DC compressor is compatible with AC power supply by AC power adaptor;
- AC 220/240V input convert to DC 12/24V output.





## Single Door Chest Freezer Series



BD-60 BD-60DC

▼ Main Feature:

Climate Class: SN/N/ST/T  
Temperature Range: -18℃-10℃  
Fast Cooling with Effective Compressor  
Mechanical Temperature Control  
Foaming Door in C5H10 Material  
Universal wheels for easy movement  
Safety with key and lock



BD-100 BD-100DC

▼ Optional Feature:

Condenser Internal/External(Optional)  
Inner LED lamp (Optional)  
Compressor fan (optional)  
Inner glass door (optional)  
Inner Partition shelf (optional)  
Inner basket (optional)  
Appearance Colour (optional)

▼ Specification:

Model	BD-60	BD-60DC	BD-100	BD-100DC
Capacity	60L	60L	100L	100L
Power Supply	220-240V 50/60Hz	DC12V/24V	220-240V 50/60Hz	DC12V/24V
Power Input	70W	45W	100W	70W
Power Consumption	0.67 kW.h/24h	0.49kW.h/24h	0.89 kW.h/24h	0.7kW.h/24h
Unit Size	525*567*597mm	525*567*597mm	525*567*833mm	525*567*833mm
Packing Size	560*570*640mm	560*570*640mm	560*570*876mm	560*570*876mm
N.w/G.w	21/23kgs	21/23kgs	27/30kgs	27/30kgs
Qty/40'HQ	336pcs	336pcs	252pcs	252pcs

## Single Door Chest Freezer Series



BD-110 BD-110DC

▼ Main Feature:

Climate Class: SN/N/ST/T  
Temperature Range: -18℃-10℃  
Fast Cooling with Effective Compressor  
Mechanical Temperature Control  
Foaming Door in C5H10 Material  
Universal wheels for easy movement  
Safety with key and lock

▼ Specification:

Model	BD-110	BD-110DC	BD-115	BD-115DC
Capacity	110L	110L	115L	115L
Power Supply	220-240V 50/60Hz	DC12V/24V	220-240V 50/60Hz	DC12V/24V
Power Input	102W	70W	110W	70W
Power Consumption	0.95kW.h/24h	0.75 kW.h/24h	1.09 kW.h/24h	0.75kW.h/24h
Unit Size	760*530*700mm	760*530*700mm	632*575*835mm	632*575*835mm
Packing Size	794*570*740mm	794*570*740mm	663*580*876mm	663*580*876mm
N.w/G.w	28/30kgs	28/30kgs	31/34kgs	31/34kgs
Qty/40'HQ	180pcs	180pcs	216pcs	216pcs



## Single Door Chest Freezer Series



BD-108 BD-108DC

▼ Main Feature:

Climate Class: SN/N/ST/T  
Temperature Range: -18℃-10℃  
Fast Cooling with Effective Compressor  
Mechanical Temperature Control  
Foaming Door in C5H10 Material  
Universal wheels for easy movement  
Safety with key and lock



BD-158 BD-158DC

▼ Optional Feature:

Condenser Internal/External(Optional)  
Inner LED lamp (Optional)  
Compressor fan (optional)  
Inner glass door (optional)  
Inner Partition shelf (optional)  
Inner basket (optional)  
Appearance Colour (optional)

▼ Specification:

Model	BD-108	BD-108DC	BD-158	BD-158DC
Capacity	108L	108L	158L	158L
Power Supply	220-240V 50/60Hz	DC12V/24V	220-240V 50/60Hz	DC12V/24V
Power Input	102W	70W	110W	100W
Power Consumption	0.95kW.h/24h	0.75 kW.h/24h	1.09kW.h/24h	0.98 kW.h/24h
Unit Size	585*555*833mm	585*555*833mm	760*555*833mm	760*555*833mm
Packing Size	620*570*876mm	620*570*876mm	794*570*876mm	794*570*876mm
N.w/G.w	28.5/30kgs	28.5/30kgs	31/34kgs	31/34kgs
Qty/40'HQ	228pcs	228pcs	180pcs	180pcs

## Single Door Chest Freezer Series



BD-208 BD-208DC

▼ Optional Feature:

Condenser Internal/External(Optional)  
Inner LED lamp (Optional)  
Compressor fan (optional)  
Inner glass door (optional)  
Inner Partition shelf (optional)  
Inner basket (optional)  
Appearance Colour (optional)

▼ Specification:

Model	BD-208	BD-208DC	BD-258	BD-258DC
Capacity	208L	208L	258L	258L
Power Supply	220-240V 50/60Hz	DC12V/24V	220-240V 50/60Hz	DC12V/24V
Power Input	130W	100W	150W	120W
Power Consumption	1.19 kW.h/24h	1.02kW.h/24h	1.38 kW.h/24h	1.1kW.h/24h
Unit Size	874*580*833mm	874*580*833mm	1034*614*833mm	1034*614*833mm
Packing Size	905*580*876mm	905*580*876mm	1065*635*876mm	1065*635*876mm
N.w/G.w	38/41kgs	38/41kgs	42/44kgs	42/44kgs
Qty/40'HQ	156pcs	156pcs	120pcs	120pcs



BD-258 BD-258DC

▼ Main Feature:

Climate Class: SN/N/ST/T  
Temperature Range: -18℃-10℃  
Fast Cooling with Effective Compressor  
Mechanical Temperature Control  
Foaming Door in C5H10 Material  
Universal wheels for easy movement  
Safety with key and lock



## Single Door Chest Freezer Series



BD-308 BD-308DC

▼ Main Feature:

Climate Class: SN/N/ST/T  
Temperature Range: -18℃-10℃  
Fast Cooling with Effective Compressor  
Mechanical Temperature Control  
Foaming Door in C5H10 Material  
Universal wheels for easy movement  
Safety with key and lock

BD-358 BD-358DC

▼ Optional Feature:

Condenser Internal/External(Optional)  
Inner LED lamp (Optional)  
Compressor fan (optional)  
Inner glass door (optional)  
Inner Partition shelf (optional)  
Inner basket (optional)  
Appearance Colour (optional)

▼ Specification:

Model	BD-308	BD-308DC	BD-358	BD-358DC
Capacity	308L	308L	358L	358L
Power Supply	220-240V 50/60Hz	DC12V/24V	220-240V 50/60Hz	DC12V/24V
Power Input	160W	120W	170W	120W
Power Consumption	1.49kW.h/24h	1.2 kW.h/24h	1.69kW.h/24h	1.25 kW.h/24h
Unit Size	1144*614*833mm	1144*614*833mm	1270*680*833mm	1270*680*833mm
Packing Size	1175*635*876mm	1175*635*876mm	1302*702*876mm	1302*702*876mm
N.w/G.w	46/49kgs	46/49kgs	50/52kgs	50/52kgs
Qty/40'HQ	90pcs	90pcs	81pcs	81pcs

## Double Door Chest Freezer Series



▲ one door or two door for option

BD-450

▼ Optional Feature:

Condenser Internal/External(Optional)  
Inner LED lamp (Optional)  
Compressor fan (optional)  
Inner glass door (optional)  
Inner Partition shelf (optional)  
Inner basket (optional)  
Appearance Colour (optional)

BD-550

▼ Main Feature:

Climate Class: SN/N/ST/T  
Temperature Range: -18℃-10℃  
Fast Cooling with Effective Compressor  
Mechanical Temperature Control  
Foaming Door in C5H10 Material  
Universal wheels for easy movement  
Safety with key and lock

▼ Specification:

Model	BD-450	BD-550
Capacity	450L	550L
Power Supply	220-240V 50/60Hz	220-240V 50/60Hz
Power Input	200W	210W
Power Consumption	1.92 kW.h/24h	2.01 kW.h/24h
Unit Size	1405*746*859mm	1630*746*859mm
Packing Size	1460*752*886mm	1680*752*886mm
N.w/G.w	60/70kgs	65/75kgs
Qty/40'HQ	72pcs	63pcs



Mengqi®

# Sliding glass door Chest Freezer Series

- 

Fast frozen
- 

Smart fresh
- 

Antibacterial tank
- 

Energy saving
- 

Overquiet operation



## Sliding glass door Chest Freezer Series



CD-260



CD-310

Optional Feature:

- Condenser Internal/External(Optional)
- Inner LED lamp (Optional)
- Compressor fan (optional)
- Inner glass door (optional)
- Inner Partition shelf (optional)
- Inner basket (optional)
- Appearance Colour (optional)

Main Feature:

- Climate Class: SN/N/ST/T
- Temperature Range: -18℃-10℃
- Fast Cooling with Effective Compressor
- Mechanical Temperature Control
- Foaming Door in C5H10 Material
- Universal wheels for easy movement
- Safety with key and lock

Specification:

Model	CD-260	CD-310
Capacity	260L	310L
Power Supply	220-240V 50/60Hz	220-240V 50/60Hz
Power Input	160W	170W
Power Consumption	2.41 kW.h/24h	2.52 kW.h/24h
Unit Size	1034*554*804mm	1144*554*804mm
Packing Size	1065*623*856mm	1175*623*856mm
N.w/G.w	45/47kgs	49/52kgs
Qty/40'HQ	123pcs	90pcs



# Curved glass door Chest Freezer Series



SC/SD-308



SC/SD-368

Main Feature:

Climate Class: SN/N/ST/T  
Temperature Range: -18℃-10℃  
Fast Cooling with Effective Compressor  
Mechanical Temperature Control  
Foaming Door in C5H10 Material  
Universal wheels for easy movement  
Safety with key and lock

Optional Feature:

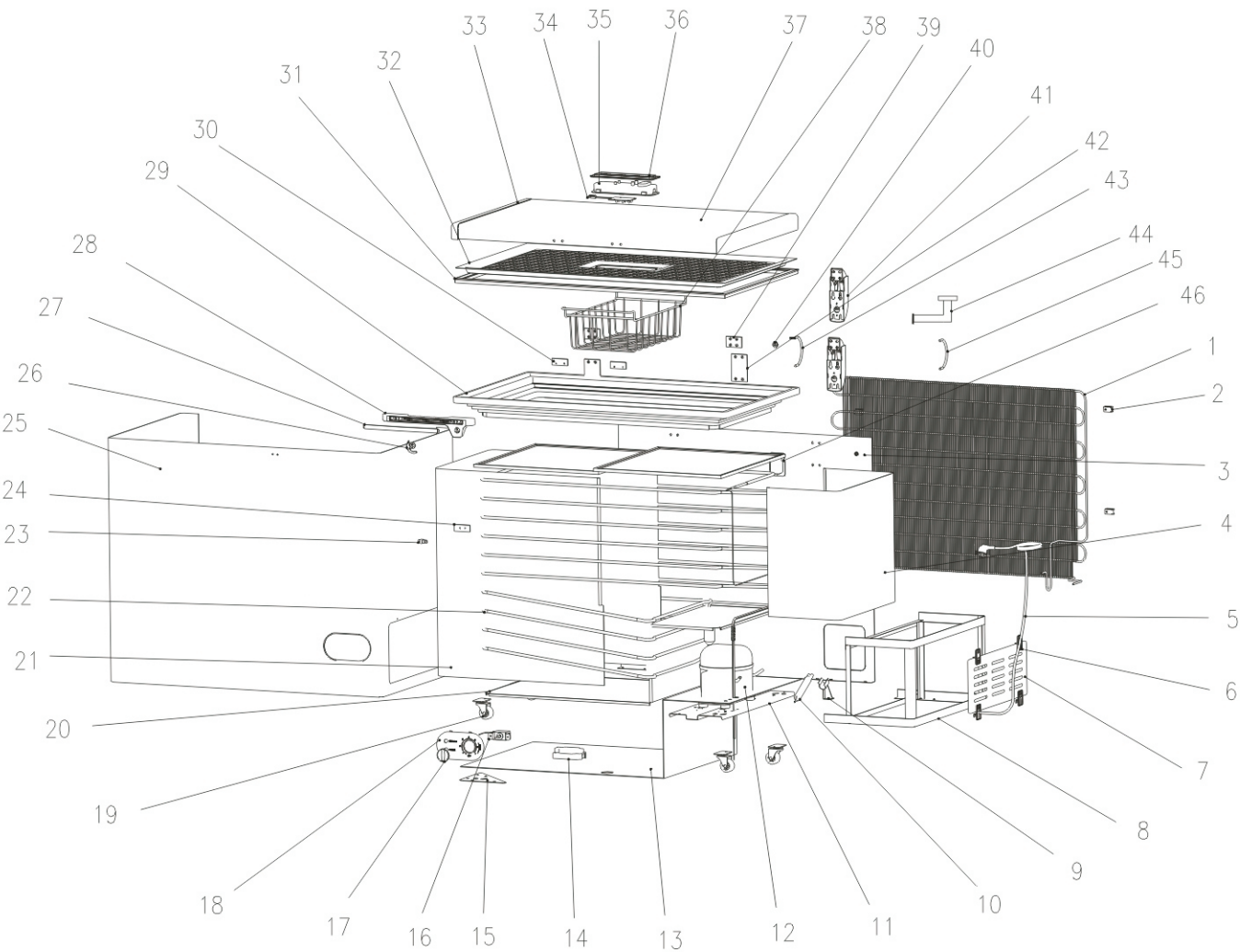
Condenser Internal/External(Optional)  
Inner LED lamp (Optional)  
Compressor fan (optional)  
Inner glass door (optional)  
Inner Partition shelf (optional)  
Inner basket (optional)  
Appearance Colour (optional)

Specification:

Model	SC/SD-308	SC/SD-368
Capacity	308L	368L
Power Supply	220-240V 50/60Hz	220-240V 50/60Hz
Power Input	200W	200W
Power Consumption	2.61 kW.h/24h	2.96 kW.h/24h
Unit Size	1094*598*837mm	1294*598*837mm
Packing Size	1132*654*887mm	1332*654*887mm
N.w/G.w	44/51kgs	49/56kgs
Qty/40'HQ	108pcs	81pcs

# Chest Freezer Profile

CE CB RoHS SASO SONCAP



- 1、condenser

2、condenser fixed card

3、back plate

4、right aluminum liner

5、plug cord

6、shutter fixed card

7、shutter

8、compressor support

9、filter fixed card

10、dry filter

11、compressor bottom

12、compressor

13、foam bottom

14、junction box

15、triangle plate

16、thermostat
- 17、thermostat knob

18、thermostat installation box

19、universal wheel

20、aluminum liner bottom

21、left aluminum liner

22、evaporator

23、lock

24、lock gasket

25、front plate

26、cylinder

27、handle cover

28、handle

29、body frame

30、handle gasket

31、door seal

32、door liner
- 33、door frame

34、LED lamp board

35、lamp box base

36、transparent cover of lamp box

37、door shell

38、basket

39、door hinge gasket

40、lamp line card

41、hinge

42、body hinge gasket

43、top lamp cable

44、drainage pipe

45、down lamp cable

46、inside lamp box



Mengqi®

# Double Chamber

Fresh and Freeze



## Double Chamber Chest Freezer Series



BCD-138 BCD-138DC

BCD-172 BCD-172DC

▼ Main Feature:

Climate Class: SN/N/ST/T  
Temperature Range: -18℃-10℃  
Fast Cooling with Effective Compressor  
Mechanical Temperature Control  
Foaming Door in C5H10 Material  
Universal wheels for easy movement  
Safety with key and lock

▼ Optional Feature:

Condenser Internal/External(Optional)  
Compressor fan (optional)  
Inner glass door (optional)  
Inner Partition shelf (optional)  
Inner basket (optional)  
Appearance Colour (optional)

▼ Specification:

Model	BCD-138	BCD-138DC	BCD-172	BCD-172DC	BCD-232	BCD-232DC
Capacity	138L	138L	172L	172L	232L	232L
Power Supply	220-240V 50/60Hz	DC12V/24V	220-240V 50/60Hz	DC12V/24V	220-240V 50/60Hz	DC12V/24V
Power Input	80W	70W	110W	100W	200W	100W
Power Consumption	0.72kW.h/24h	0.57kW.h/24h	0.89 kW.h/24h	0.89 kW.h/24h	1.19 kW.h/24h	0.89kW.h/24h
Unit Size	995*555*660mm	995*555*660mm	995*555*810mm	995*555*810mm	1094*590*850mm	1094*590*850mm
Packing Size	1030*580*710mm	1030*580*710mm	1030*580*860mm	1030*580*860mm	1130*615*890mm	1130*615*890mm
N.w/G.w	35/38kgs	35/38kgs	43/47kgs	43/47kgs	52/57kgs	52/57kgs
Qty/40'HQ	138pcs	138pcs	138pcs	138pcs	102pcs	102pcs



Vehicle & Household Refrigerator



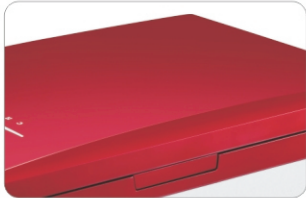
- Beautiful and Professional Industrial Design;
- Effective compressor for fast cooling to 0℃ within 30 minutes, deep freezing to -25℃;
- High quality compressor with self-protection function against the bad situation(drastic shaking);
- Thick wall with advanced foaming technology for better insulation effect;
- Intelligent controller with low-voltage automatic detection and automatic shut-off.



Vehicle & Household Refrigerator



Beautiful Painting



Safety Lock



Temperature control



Ergonomic Handle

Colour Option :



Red



Black White



Black

Specification:

Model	Capacity	Power Supply	Power Input	Power Consumption
BD-25DC	25L	DC 12V/24V	40W	0.43 kW.h/24h
BD-30DC	30L	DC 12V/24V	40W	0.48 kW.h/24h
BD-40DC	40L	DC 12V/24V	50W	0.6 kW.h/24h
BD-50DC	50L	DC 12V/24V	60W	0.65 kW.h/24h
Model	Unit Size	Packing Size	N.w/G.w	Qty/40'HQ
BD-25DC	580*370*330mm	660*430*385mm	14/16kgs	540pcs
BD-30DC	580*370*365mm	660*430*420mm	15/17kgs	540pcs
BD-40DC	580*370*435mm	660*430*490mm	17/19kgs	450pcs
BD-50DC	580*370*495mm	660*430*560mm	19/21kgs	360pcs



Vehicle & Household Refrigerator



Glass cover with a design pattern



Digital temperature control



Safety catch

Mini Refrigerator



40L Reasonable space



Food



Fruit



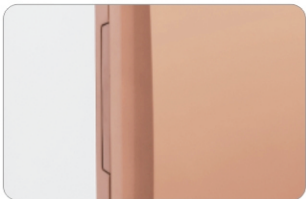
Beverage



Cosmetic



Ergonomic Handle



Safety Lock

Colour Option :



Misty-Black



Silver White

Colour Option :



Blossom Red



Misty-Black



Champagne

Specification:

Model	Capacity	Power Supply	Power Input	Power Consumption
BD-25DC	25L	DC 12V/24V	40W	0.43 kW.h/24h
BD-30DC	30L	DC 12V/24V	40W	0.48 kW.h/24h
BD-40DC	40L	DC 12V/24V	50W	0.6 kW.h/24h
BD-50DC	50L	DC 12V/24V	60W	0.65 kW.h/24h
Model	Unit Size	Packing Size	N.w/G.w	Qty/40'HQ
BD-25DC	580*370*330mm	660*430*385mm	14/16kgs	540pcs
BD-30DC	580*370*365mm	660*430*420mm	15/17kgs	540pcs
BD-40DC	580*370*435mm	660*430*490mm	17/19kgs	450pcs
BD-50DC	580*370*495mm	660*430*560mm	19/21kgs	360pcs

Specification:

Model	Capacity	Power Supply	Power Input	Power Consumption
BC-40	40L	220-240V/110-127V 50/60Hz	65W	0.45 kW.h/24h
Model	Unit Size	Packing Size	N.w/G.w	Qty/40'HQ
BC-40	370*435*600mm	410*480*625mm	14/16kgs	564pcs



**Mengqi®**

# Water Dispenser

A Professional Manufacturer

- 220-240V/ 50/60Hz; 110-127V/ 60Hz;
- Beautiful and Professional Industrial Design;
- Fast cooling with effective compressor by R134a;
- Stainless steel water tank and Silicon water pipe for Healthily and Environmentally;
- Pure copper pipe of evaporator for heat exchange;
- Anti-dry Burning Protection for safe operation.





# RO Filter System Water Dispenser

The creator of healthy and pure drinking water, direct to live water source and make life easier.

## Five Stages RO Filter System



01 PP Filter(PP Sediment Filter ): Remove the sand,dirt and rust particles in water;



02 UDF/GAC(Granular Carbon Filter): Absorb the chlorine,organic chemicals, odor;



03 CTO(Block Carbon Filter): Completely absorb the chlorine, organic chemicals, odor, smell turbidity ,suspension;



04 RO Membrane: Remove the bacteria and virus, heavy metals, salt, bad mineral substance, dissolved matter and chemical;



05 T33(Post Inline Carbon Filter): Absorb the odor and adjust the taste for final pure water.



YLR-88F



YLR-88F



YLR-T88F



YLR-T88F

## Water Dispenser With RO Filter System



YLR-87F



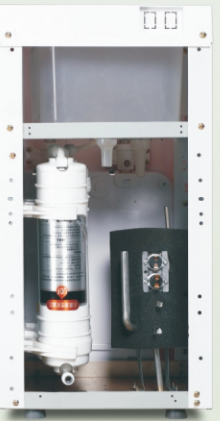
YLR-86F



YLR-T87F



YLR-T86F





Floor-Standing Series

Model Code:

YLR1-000 (Electronic cooling with storage cabinet)  
YLR2-000A (Compressor cooling with storage cabinet)  
YLR2-000B (Compressor cooling with refrigerator cabinet)

Specification:

Heating Input 500W  
Heating Capacity 5L/H;85-95°C  
Cooling Input(Compressor/Electronic) 95W/110W 75W  
Cooling Capacity(Compressor/Electronic) 2L/H;6-10°C 0.75L/H;10-15°C

Main Feature:

Storage Cabinet (Optional)  
Refrigerator Cabinet (Optional)  
Electronic Cooling (Optional)  
Compressor Cooling (Optional)  
Appearance Colour (Optional)  
Minor Protection Design



Packing Size 350\*290\*1070mm  
Qty/40HQ 544pcs



Packing Size 350\*290\*1070mm  
Qty/40HQ 544pcs

Floor-Standing Series

Model Code:

YLR1-000 (Electronic cooling with storage cabinet)  
YLR2-000A (Compressor cooling with storage cabinet)  
YLR2-000B (Compressor cooling with refrigerator cabinet)

Specification:

Heating Input 500W  
Heating Capacity 5L/H;85-95°C  
Cooling Input(Compressor/Electronic) 95W/110W 75W  
Cooling Capacity(Compressor/Electronic) 2L/H;6-10°C 0.75L/H;10-15°C

Main Feature:

Storage Cabinet (Optional)  
Refrigerator Cabinet (Optional)  
Electronic Cooling (Optional)  
Compressor Cooling (Optional)  
Appearance Colour (Optional)



Packing Size 350\*330\*1020mm  
Qty/40HQ 476pcs



Packing Size 350\*330\*1020mm  
Qty/40HQ 476pcs



# Standing Water Dispenser

Model Code:

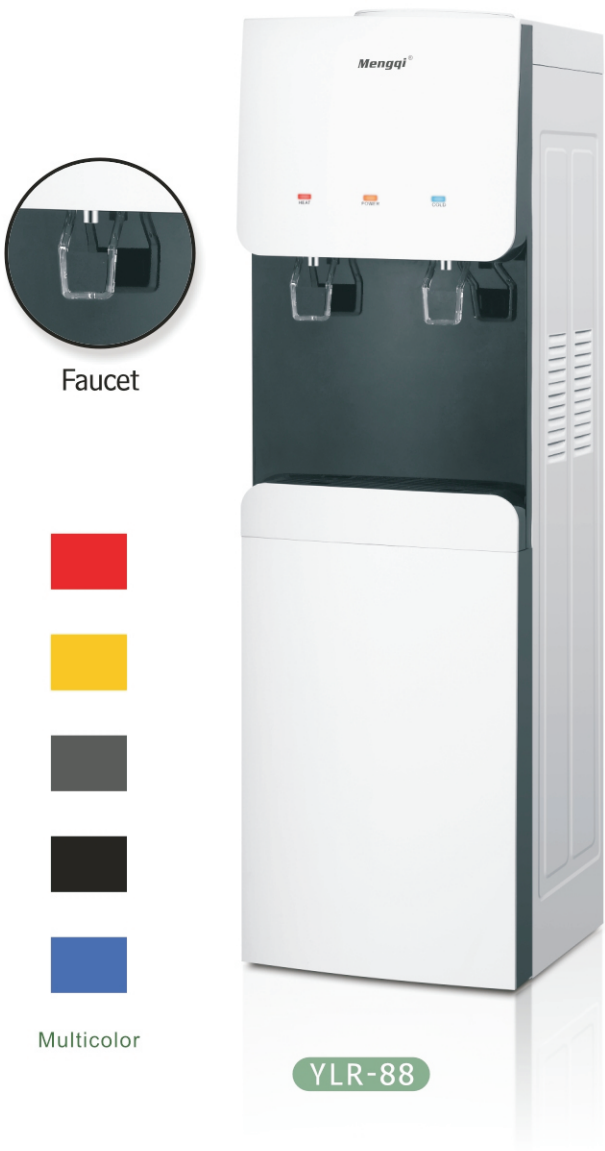
- YLR1-000 (Electronic cooling with storage cabinet)
- YLR2-000A (Compressor cooling with storage cabinet)
- YLR2-000B (Compressor cooling with refrigerator cabinet)

Specification:

Heating Input 500W  
Heating Capacity 5L/H;85-95°C  
Cooling Input(Compressor/Electronic) 95W/110W 75W  
Cooling Capacity(Compressor/Electronic) 2L/H;6-10°C 0.75L/H;10-15°C

Main Feature:

- Storage Cabinet (Optional)
- Refrigerator Cabinet (Optional)
- Electronic Cooling (Optional)
- Compressor Cooling (Optional)
- Appearance Colour (Optional)



Packing Size 350\*330\*1070mm  
Qty/40HQ 476pcs



Packing Size 350\*290\*1070mm  
Qty/40HQ 544pcs

# Standing Water Dispenser

Model Code:

- YLR1-000 (Electronic cooling with storage cabinet)
- YLR2-000A (Compressor cooling with storage cabinet)
- YLR2-000B (Compressor cooling with refrigerator cabinet)

Specification:

Heating Input 500W  
Heating Capacity 5L/H;85-95°C  
Cooling Input(Compressor/Electronic) 95W/110W 75W  
Cooling Capacity(Compressor/Electronic) 2L/H;6-10°C 0.75L/H;10-15°C

Main Feature:

- Storage Cabinet (Optional)
- Refrigerator Cabinet (Optional)
- Electronic Cooling (Optional)
- Compressor Cooling (Optional)
- Appearance Colour (Optional)



Packing Size 350\*330\*990mm  
Qty/40HQ 476pcs



Packing Size 350\*330\*1020mm  
Qty/40HQ 476pcs



# Standing Water Dispenser

Model Code:

YLR1-000 (Electronic cooling with storage cabinet)  
YLR2-000A (Compressor cooling with storage cabinet)  
YLR2-000B (Compressor cooling with refrigerator cabinet)

Specification:

Heating Input 500W  
Heating Capacity 5L/H;85-95°C  
Cooling Input(Compressor/Electronic) 95W/110W 75W  
Cooling Capacity(Compressor/Electronic) 2L/H;6-10°C 0.75L/H;10-15°C

Main Feature:

Storage Cabinet (Optional)  
Refrigerator Cabinet (Optional)  
Electronic Cooling (Optional)  
Compressor Cooling (Optional)  
Appearance Colour (Optional)  
Minor Protection Design



YLR-163

Packing Size 350\*330\*990mm  
Qty/40HQ 476pcs



YLR-62

Packing Size 350\*330\*990mm  
Qty/40HQ 476pcs

# Standing Water Dispenser

Model Code:

YLR1-000 (Electronic cooling with storage cabinet)  
YLR2-000A (Compressor cooling with storage cabinet)  
YLR2-000B (Compressor cooling with refrigerator cabinet)

Specification:

Heating Input 500W  
Heating Capacity 5L/H;85-95°C  
Cooling Input(Compressor/Electronic) 95W/110W 75W  
Cooling Capacity(Compressor/Electronic) 2L/H;6-10°C 0.75L/H;10-15°C

Main Feature:

Storage Cabinet (Optional)  
Refrigerator Cabinet (Optional)  
Electronic Cooling (Optional)  
Compressor Cooling (Optional)  
Appearance Colour (Optional)  
Minor Protection Design



YLR-11

Packing Size 330\*330\*990mm  
Qty/40HQ 490pcs



YLR-22

Packing Size 330\*330\*990mm  
Qty/40HQ 490pcs



YLR-123

Packing Size 350\*330\*990mm  
Qty/40HQ 476pcs



# Standing Water Dispenser

Model Code:

- YLR1-000 (Electronic cooling with storage cabinet)
- YLR2-000A (Compressor cooling with storage cabinet)
- YLR2-000B (Compressor cooling with refrigerator cabinet)

Specification:

Heating Input 500W  
Heating Capacity 5L/H;85-95°C  
Cooling Input(Compressor/Electronic) 95W/110W 75W  
Cooling Capacity(Compressor/Electronic) 2L/H;6-10°C 0.75L/H;10-15°C

Main Feature:

- Storage Cabinet (Optional)
- Refrigerator Cabinet (Optional)
- Electronic Cooling (Optional)
- Compressor Cooling (Optional)
- Appearance Colour (Optional)
- Minor Protection Design



YLR-10

Packing Size 330\*330\*990mm  
Qty/40HQ 490pcs



YLR-20

Packing Size 330\*330\*990mm  
Qty/40HQ 490pcs



YLR-30

Packing Size 330\*330\*990mm  
Qty/40HQ 490pcs

# Floor-Standing Series

Model Code:

- YLR1-000 (Electronic cooling with storage cabinet)
- YLR2-000A (Compressor cooling with storage cabinet)
- YLR2-000B (Compressor cooling with refrigerator cabinet)

Specification:

Heating Input 500W  
Heating Capacity 5L/H;85-95°C  
Cooling Input(Compressor/Electronic) 95W/110W 75W  
Cooling Capacity(Compressor/Electronic) 2L/H;6-10°C 0.75L/H;10-15°C

Main Feature:

- Storage Cabinet (Optional)
- Refrigerator Cabinet (Optional)
- Electronic Cooling (Optional)
- Compressor Cooling (Optional)
- Appearance Colour (Optional)
- Minor Protection Design



YLR-03

Packing Size 330\*330\*990mm  
Qty/40HQ 490pcs



YLR-05

Packing Size 330\*330\*990mm  
Qty/40HQ 490pcs



YLR-07

Packing Size 330\*330\*990mm  
Qty/40HQ 490pcs



- 220-240V/ 50/60Hz; 110-127V/ 60Hz;
- Beautiful and Professional Industrial Design;
- Fast cooling with effective compressor by R134a;
- Stainless steel water tank and Silicon water pipe for Healthily and Environmentally;
- Pure copper pipe of evaporator for heat exchange;
- Anti-dry Burning Protection for safe operation.



## Standing Water Dispenser

✔ Model Code:

- YLR1-000 (Electronic cooling with storage cabinet)
- YLR2-000A (Compressor cooling with storage cabinet)
- YLR2-000B (Compressor cooling with refrigerator cabinet)

✔ Specification:

- Heating Input 500W
- Heating Capacity 5L/H;85-95°C
- Cooling Input(Compressor/Electronic) 95W/110W 75W
- Cooling Capacity(Compressor/Electronic) 2L/H;6-10°C 0.75L/H;10-15°C

✔ Main Feature:

- Storage Cabinet (Optional)
- Refrigerator Cabinet (Optional)
- Electronic Cooling (Optional)
- Compressor Cooling (Optional)
- Appearance Colour (Optional)



YLR-101

Packing-Size 370\*390\*1105mm  
Qty/40HQ 360pcs



YLR-102

Packing-Size 355\*395\*1170mm  
Qty/40HQ 360pcs



# Mengqi® Table Top Water Dispenser Series



YLR-T89

Packing Size 350\*290\*570mm  
Qty/40HQ 1152pcs



YLR-T88

Packing Size 350\*330\*600mm  
Qty/40HQ 840pcs

## Desk Top Water Dispenser Series

### Model Code:

YLR1-T000 (Electronic Cooling)  
YLR2-T000 (Compressor Cooling)

### Specification:

Heating Input 500W  
Heating Capacity 5L/H;85-95°C  
Cooling Input(Compressor/Electronic) 95W 75W  
Cooling Capacity(Compressor/Electronic) 2L/H;6-10°C 0.75L/H;10-15°C

### Main Feature:

Electronic Cooling (Optional)  
Compressor Cooling (Optional)  
Appearance Colour (Optional)



YLR-T87

Packing Size 350\*290\*570mm  
Qty/40HQ 1152pcs



YLR-T86

Packing Size 350\*290\*550mm  
Qty/40HQ 1152pcs



YLR-T85

Packing Size 350\*330\*560mm  
Qty/40HQ 1099pcs



YLR-T84

Packing Size 350\*330\*560mm  
Qty/40HQ 1099pcs



## Table Top Water Dispenser

▼ Model Code:

YLR1-T000 (Electronic Cooling)  
YLR2-T000 (Compressor Cooling)

▼ Specification:

Heating Input 500W  
Heating Capacity 5L/H;85-95°C  
Cooling Input(Compressor/Electronic) 95W 75W  
Cooling Capacity(Compressor/Electronic) 2L/H;6-10°C 0.75L/H;10-15°C

▼ Main Feature:

Electronic Cooling (Optional)  
Compressor Cooling (Optional)  
Appearance Colour (Optional)



YLR-T62

Packing Size 350\*330\*560mm  
Qty/40HQ 1099pcs



YLR-T83

Packing Size 350\*330\*560mm  
Qty/40HQ 1099pcs



YLR-T66

Packing Size 350\*330\*560mm  
Qty/40HQ 1099pcs



YLR-T123

Packing Size 350\*330\*560mm  
Qty/40HQ 1099pcs

## Table Top Water Dispenser

▼ Model Code:

YLR1-T000 (Electronic Cooling)  
YLR2-T000 (Compressor Cooling)

▼ Specification:

Heating Input 500W  
Heating Capacity 5L/H;85-95°C  
Cooling Input(Compressor/Electronic) 95W 75W  
Cooling Capacity(Compressor/Electronic) 2L/H;6-10°C 0.75L/H;10-15°C

▼ Main Feature:

Electronic Cooling (Optional)  
Compressor Cooling (Optional)  
Appearance Colour (Optional)



YLR-T163

Packing Size 350\*330\*560mm  
Qty/40HQ 1099pcs



YLR-T11

Packing Size 330\*330\*550mm  
Qty/40HQ 1099pcs



YLR-T10

Packing Size 330\*330\*530mm  
Qty/40HQ 1099pcs



YLR-T22

Packing Size 330\*330\*560mm  
Qty/40HQ 1099pcs



# Table Top Water Dispenser

Model Code:

YLR1-T000 (Electronic Cooling)  
YLR2-T000 (Compressor Cooling)

Specification:

Heating Input 500W  
Heating Capacity 5L/H;85-95°C  
Cooling Input(Compressor/Electronic) 95W 75W  
Cooling Capacity(Compressor/Electronic) 2L/H;6-10°C 0.75L/H;10-15°C

Main Feature:

Electronic Cooling (Optional)  
Compressor Cooling (Optional)  
Appearance Colour (Optional)



Packing Size 330\*330\*560mm  
Qty/40HQ 1099pcs



Packing Size 330\*330\*560mm  
Qty/40HQ 1099pcs

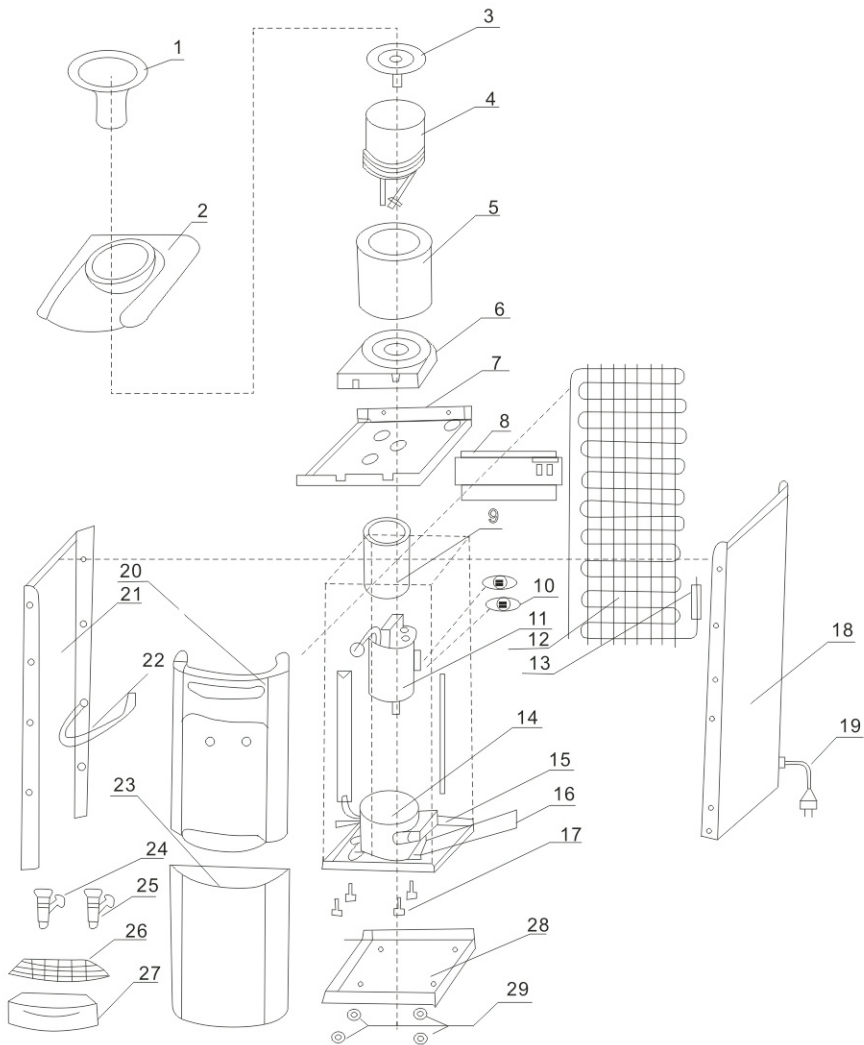


Packing Size 350\*330\*560mm  
Qty/40HQ 1099pcs



Packing Size 350\*330\*560mm  
Qty/40HQ 1099pcs

# Water Dispenser Series



- 1.water guard

2.top cover

3.plastic tray

4.cold tank

5.cold tank foam cask

6.cold tank foam base

7.upmiddle plate

8.switch plate

9.hot tank sponge

10.hot thermostat
- 11.hot tank

12.condenser

13.drier-filter

14.compressor

15.middle plate

16.compressor base angle

17.base angle screw

18.right side panel

19.plug cord

20.up plastic panel
- 21.left side panel

22.earthing wire

23.plastic

24.hot tap

25.cold tap

26.plastic net

27.drain box

28.base plate

29.dispenser base angle



Water Purifier Series



YR-08

Dimension:310\*310\*255mm  
20'/40'HQ:1100pcs/2586pcs  
N.W./G.W.:2.5kgs/3.0kgs



YR-100

Dimension:320\*320\*280mm  
20'/40'HQ:2520pcs/5040pcs  
N.W./G.W.:10kgs/11kgs(10pcs)



YR-12

Dimension:285\*285\*225mm  
20'/40'HQ:1584pcs/3600pcs  
N.W./G.W.:2.2kgs/2.4kgs



YR-02

Dimension:265\*265\*260mm  
20'/40'HQ:1344pcs/3440pcs  
N.W./G.W.:1.0kgs/1.5kgs



YR-05

Dimension:270\*270\*410mm  
20'/40'HQ:800pcs/2016pcs  
N.W./G.W.:1.0kgs/1.5kgs



YR-10

Dimension:270\*270\*410mm  
20'/40'HQ:800pcs/2016pcs  
N.W./G.W.:1.0kgs/1.5kgs

Water Purifier Series



YR-24

Dimension:378\*278\*357mm  
20'/40'HQ:720pcs/1720pcs  
N.W./G.W.:3.5kgs/3.8kgs



YR-25

Dimension:335\*335\*260mm  
20'/40'HQ:880pcs/2136pcs  
N.W./G.W.:3.7kgs/4.1kgs



YR-28

Dimension:375\*350\*270mm  
20'/40'HQ:748pcs/1796pcs  
N.W./G.W.:4.7kgs/5.1kgs



Accessories and plugs

Faucets Collection



T-1



T-3



T-5



T-6



T-7



T-8



T-9



T-15



T-16

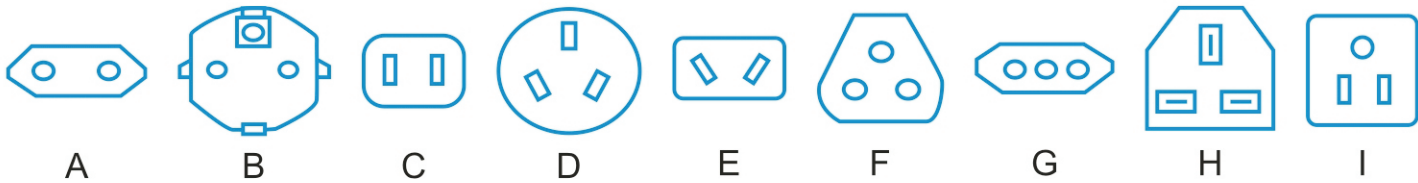


T-17

Handle Collection



Choice of Plugs Type



**Mengqi**<sup>®</sup>